



CATALOGO PRODOTTI

PRODUCTS CATALOGUE



## PINZE E ROTANTI CARICATORI BARLOADER COLLETS



**PINZE E ROTANTI PER CARICATORI CUCCHI, IEMCA, LNS, TOP AUTOMAZIONI; PINZE PER CARICATORI CON FILETTO DESTRO E CON FILETTO SINISTRO; PINZA AD INNESTO CON SPINA LATERALE.**



**COLLETS AND REVOLVING FOR BARLOADER CUCCHI, IEMCA, LNS, TOP AUTOMAZIONI; BARLOADER COLLETS WITH RIGHT THREAD AND WITH LEFT THREAD; BARLOADER COLLETS WITH LATERAL HOLE FOR PIN; FEED FINGERS COLLETS.**



**CHIA-MO SRL**  
VIA CADUTI DI SABBIBUONO, 12  
40011 ANZOLA DELL'EMILIA  
BOLOGNA ITALY

TEL +39 051734153  
FAX +39 051734958

WWW.CHIAMO.IT  
INFO@CHIAMO.IT



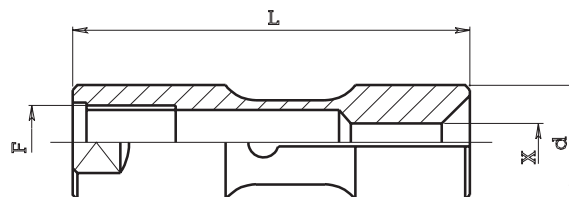
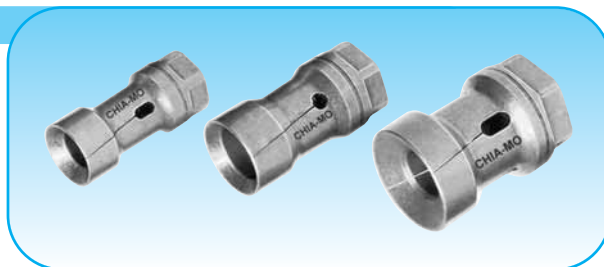
**PINZE PER CARICATORI Tipo 035 e 036**

BARLOADER COLLETS

**PINZE PER CARICATORI CON FILETTO DESTRO**

BARLOADER COLLETS WITH RIGHT THREAD

Code				max bores		Machine
ART.	d	L	F	X min	X max	caricatore
036.070	7.5	40	5x0.5	1.6	6.5	IEMCA
036.100	10	50	6x0.75	2	8	CUCCHI
036.101	10	40	6x0.75	2	8	IEMCA
036.120	12	52	7x0.75	2	10.5	CUCCHI
036.121	12	42	7x0.75	2	10.5	IEMCA
036.140	14	52	8x1	3	12.5	CUCCHI
036.150	15	52	8x1	2	13.5	CUCCHI
036.151	15	42	8x1	2	13.5	IEMCA
036.160	16	52	8x1	10	14	CUCCHI
036.161	16	42	8x1	10	14	IEMCA
036.180	18	59	10x1	4	16	CUCCHI
036.200	20	59	10x1	3	18	CUCCHI e IEMCA
036.220	22	59	10x1	16	20	CUCCHI E IEMCA
036.250	25	59	10x1	4	23	IEMCA
036.251	25	59	14x1	4	23	CUCCHI
036.300	30	65	10x1	8	28	IEMCA
036.301	30	65	18x1.5	10	28	CUCCHI
036.320	32	65	10x1	29	30	IEMCA
036.400	40	70	25x1.5	10	37	CUCCHI e IEMCA
036.420	42	70	25x1.5	38	39	CUCCHI E IEMCA
036.460	46	72	25x1.5	37	42	CUCCHI e IEMCA
036.550	55	80	25x1.5	43	51	CUCCHI e IEMCA (1)
036.600	60	80	25x1.5	30	55	CUCCHI e IEMCA
036.650	65	80	25x1.5	56	60	CUCCHI e IEMCA
036.700	69.5	80	25x1.5	61	65	CUCCHI e IEMCA
036.750	75	80	25x1.5	66	70	CUCCHI e IEMCA



(1) A RICHIESTA  
On request

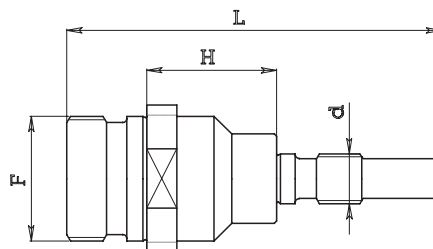
**PINZE PER CARICATORI CON FILETTO SINISTRO**

BARLOADER COLLETS WITH LEFT THREAD

Code				max bores		Machine
ART.	d	L	F	X min	X max	caricatore
035.190	19	60	10x1 sx	4	16	CUCCHI PB 20
035.200	20	60	10x1 sx	17	18	CUCCHI PB 20
035.230	23	60	14x1 sx	4	20	CUCCHI PB 24
035.250	25	60	14x1 sx	20	23	CUCCHI PB 24
035.290	29	65	18x1.5 sx	4	26	CUCCHI PB 30
035.300	30	65	18x1.5 sx	26	27.5	CUCCHI PB 30
035.350	35	70	18x1.5 sx	24	33	CUCCHI PB 35
035.370	37	70	25x1.5 sx	10	34	CUCCHI PB 38
035.390	39	70	25x1.5 sx	34	36	CUCCHI PB 40
035.400S*	40	70	25x1.5 sx	4	36	SACO
035.410	41	70	25x1.5 sx	36	38	CUCCHI PB 42
035.410S*	41	70	25x1.5 sx	36.5	38	SACO
035.470	47	70	30x1.5 sx	14	43	CUCCHI PB 48
035.490	49	70	30x1.5 sx	44	45	CUCCHI PB 50
035.590	59	80	30x1.5 sx	30	55	CUCCHI PB 60
035.650	65	80	30x1.5 sx	56	60	CUCCHI PB 68
035.700	69.5	80	30x1.5 sx	61	65	CUCCHI PB 70-72
035.750	75	80	30x1.5 sx	66	70	CUCCHI PB 75

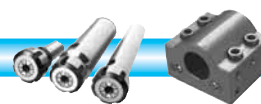
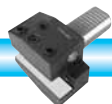
**NIPLEX DI RIDUZIONE PER PINZE CARICATORE**

NIPLEX REDUCTION FOR BARLOADER COLLETS



Code				Machine	
ART.	F	L	H	d	per pinza
036000 S10	25x1.5 sx	75	26	10x1	036.200 036.250
036000 S14	25x1.5 sx	75	26	14x1	036.251
036000 S18	25x1.5 sx	75	20	18x1.5	036.301
036000 S25	25x1.5 sx	75	14	25x1.5	036.400 036.420 036.460

(\*) FILETTO LATERALE M6.  
(\*) Screw on side M6.





**ROTANTI PER CARICATORI Tipo 516 e 517**

*BARLOADERS REVOLVING*

**PER CARICATORI "IEMCA" CON FILETTO DESTRO**

*REVOLVING "IEMCA" WITH RIGHT THREAD*

ART. (Code)	D	L	F	d	fig.
516.007	7.5	126	6x0.75	5x0.5	1
516.010	10	113	8x1	6x0.75	1
516.012	12	116	10x1	7x0.75	1
516.015	15	121	12x1.5	8x1	1
516.020	20	133	14x1.5	10x1	1
516.025	25	133	14x1.5	10x1	1
516.030	30	135	14x1.5	10x1	1

**PER CARICATORI "CUCCHI" CON FILETTO DESTRO**

*REVOLVING "CUCCHI" WITH RIGHT THREAD*

ART. (Code)	D	L	F	d	fig.
517.010	10	107	7x1	6x0.75	2
517.012	12	107	8x1.25	7x0.75	2
517.014	14	107	10x1.5	8x1	2
517.016	16	107	10x1.5	8x1	2
517.019	19	118	12x1.75	10x1	2
517.025	25	118	20x1.5	14x1	2
517.030	30	123	24x1.5	18x1.5	2
517.040	40	61	28x1.5	25x1.5	4

**PER CARICATORI "CUCCHI" CON FILETTO SINISTRO**

*REVOLVING "CUCCHI" WITH LEFT THREAD*

ART. (Code)	D	L	F	d	fig.
517.120	19	100	17x1 sx	10x1 sx	2
517.120P	19	100	17x1 sx	14x1.5 sx	2
517.120S	19	105	17x1 sx	10x1 sx	3
517.125	24	100	20x1.5 sx	14x1 sx	2
517.125P	24	100	20x1.5 sx	20x1.5 sx	2
517.125S	24	105	20x1.5 sx	14x1 sx	3
517.130	29.3	100	26x1.5 sx	18x1.5 sx	2
517.130S	29.3	100	26x1.5 sx	18x1.5 sx	3
517.130P	29.3	100	26x1.5 sx	26x1.5 sx	2
517.135	35	100	30x1.5 sx	18x1.5 sx	2
517.135P	35	100	30x1.5 sx	30x1.5 sx	2
517.138	38	83	30x1.5 sx	25x1.5 sx	2
517.138P	38	83	30x1.5 sx	30x1.5 sx	2
517.145	45	100	36x1.5 sx	30x1.5 sx	2
517.145P	45	100	36x1.5 sx	36x1.5 sx	2
517.148	48	100	36x1.5 sx	30x1.5 sx	2
517.148P	48	100	36x1.5 sx	36x1.5 sx	2
517.160	60	113	50x1.5 sx	30x1.5 sx	2

**PER CARICATORI "GIORGI" CON FILETTO DESTRO**

*REVOLVING "GIORGI" WITH RIGHT THREAD*

ART. (Code)	D	L	F	d	fig.
517.719	19	92	14x1.5	10x1	2
517.728	28	100	20x1.5	14x1	2

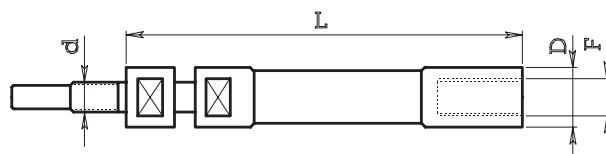


Fig. 1

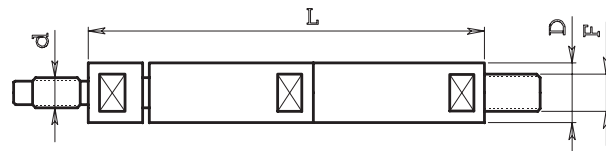


Fig. 2

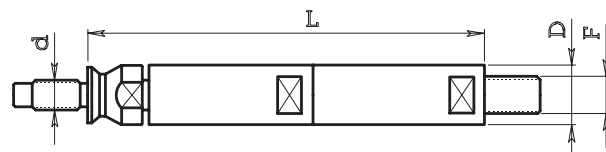


Fig. 3

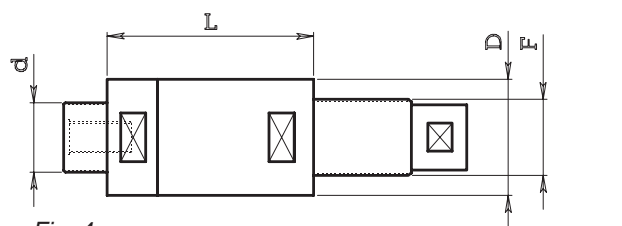
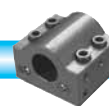
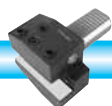


Fig. 4





**PINZE PER CARICATORI Tipo 034**

BARLOADERS COLLETS

**PER CARICATORI (FOR BARLOADER):**

FMB - TRAUB - HAGENUK - IEMCA - ROBOBAR  
LNS - SAMECA - MINISPRINT - MINITURBO

ART. (Code)	D	L	F	X min	X max	Ø B	A	fig.
034.105	5	37	M 4	1,5	4	-	-	2
034.107	7	37	M 5	2	5,5	-	-	2
034.110	10	40	7 H7	3	8	4,1	6	1
034.112	12	40	8 H7	3	9,5	4,1	6	1
034.115	15	40	11 H7	3	13	6,1	6	1
034.116	16	40	11 H7	3	14	6,1	6	1
034.118	18	40	11 H7	3	16	6,1	6	1
034.120	20	65	14 H7	4	18	8,1	7	1
034.125	25	65	20 H7	4	22	8,1	7	1
034.132	32	65	20 H7	10	29	8,1	7	1

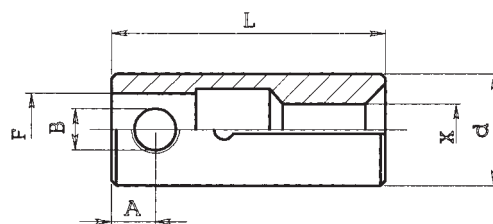


Fig. 1

**PER CARICATORI (FOR BARLOADER):**

LNS TRYTON

ART. (Code)	D	L	F	X min	X max	fig.
034.006	6	30	M 4	1,5	4,5	2
034.007	7	30	M 4	2	5	2
034.010	10	30	M 5	2	8	2
034.012	12	30	M 6	3	9,5	2
034.013	12,5	30	M 6	9,5	10,5	2
034.017	16,5	35	M 8	4	14,5	2
034.020	20	35	M 10	4	18	2

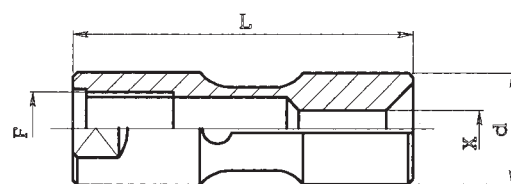


Fig. 2

**PER CARICATORI (FOR BARLOADER):**

FMB - TRAUB - HAGENUK - IEMCA - ROBOBAR  
LNS - SAMECA - MINISPRINT - MINITURBO

ART. (Code)	D	L	F	X min	X max	fig.
034.225	25	90	20 H7	3	20	3
034.232	32	90	20 H7	5	29,5	3
034.236	36	90	20 H7	5	33	3
034.242	42	90	20 H7	6	39	3

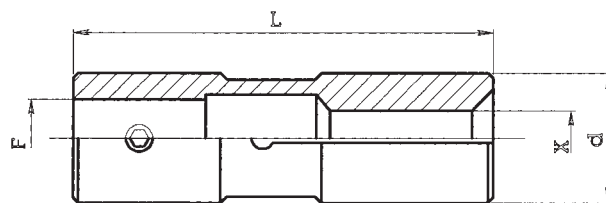
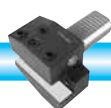


Fig. 3





**ROTANTI PER CARICATORI Tipo 518**

*BARLOADERS REVOLVING*

**PER CARICATORI (FOR BARLOADER):**

*TRAUB - FMB - HAGENUK - LNS*

ART. (Code)	D	L	F	d	fig.
518.005	5,5	69	-	M 4	1
518.007	7	78,5	M 5	M 5	1

**PER CARICATORI (FOR BARLOADER):**

*FMB - HAGENUK*

ART. (Code)	D	L	F	d	H	fig.
518.110	10	45,5	8	7	31	2
518.112	12	45,5	8	8	31	2

**PER CARICATORI (FOR BARLOADER):**

*FMB - HAGENUK - TRAUB*

ART. (Code)	D	L	F	d	H	fig.
518.115	15	50	12	11	31	2
518.118	18	50	12	11	31	2
518.120	20	50	17	14	31	2
518.125	25	50	20	20	31	2

**PER CARICATORI (FOR BARLOADER):**

*TORNOS ROBOBAR*

ART. (Code)	D	L	F	d	fig.
518.205	5,5	78	M 3	M 4	1
518.207	7,5	78	5	M 5	1
518.210	10,5	81	8	7	3
518.216	16	126	10	11	3
518.218	18	126	10	11	3
518.221	20,5	127	14	14	3
518.225	25	127	20	20	3
518.226	26	127	20	20	3
518.236	36	127	25	20	3

**PER CARICATORI (FOR BARLOADER):**

*TRAUB - FMB - HAGENUK - LNS*

ART. (Code)	D	L	F	d	fig.
518.310	10	51	8	7	3
518.312	12	51	8	8	3
518.315	15	51	12	11	3
518.318	18	51	12	11	3
518.320	20	56	17	14	3
518.320B	20	51	12	11	3
518.325	25	58,5	20	20	3

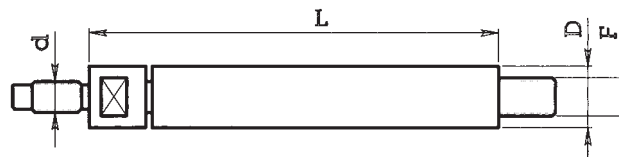


Fig. 1

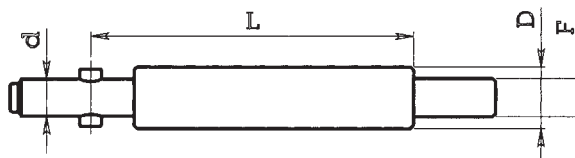


Fig. 3

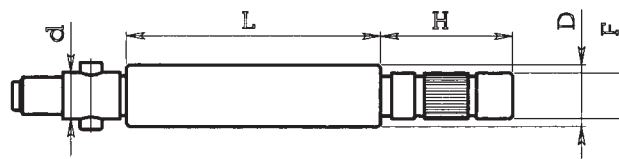
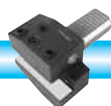
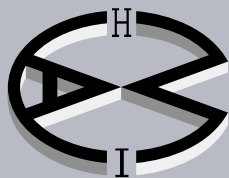
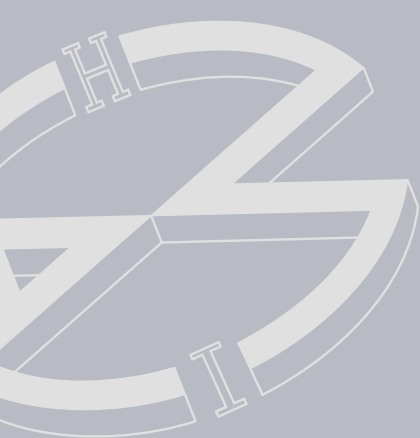


Fig. 2





# CHIA-MO

ITALY

## DOVE SIAMO WHERE WE ARE



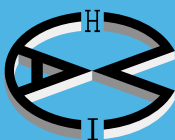
**CHIA-MO**

Via Caduti di Sabbiuno, 12

40011 Anzola dell'Emilia (Bologna) Italy

Tel. +39 051 734153 - Fax +39 051 734958

info@chiamo.it - www.chiamo.it



**CHIA-MO**  
ITALY



Via Caduti di Sabbiuono, 12  
40011 Anzola dell'Emilia (Bologna) Italy  
Tel. +39 051 734153 - Fax +39 051 734958  
info@chiamo.it - www.chiamo.it

