

CHIA-MO

WWW.CHIAMO.IT

I T A L Y

PINZE PER TORNI PLURIMANDRINO

COLLETS FOR MULTISPLINDLE LATHES



PINZE PER TORNI PLURIMANDRINO

COLLETS FOR MULTISPINDLE LATHES

2

Le pinze per torni plurimandrino vengono impiegate su macchine da produzioni Gildemeister, Schütte, Mori say, Wickman, Tornos, Index, Traub, ecc ... possiamo fornire tutta la serie per la linea mandrino del tornio: pinze per il mandrino principale, pinze per il mandrino di ripresa, pinze di avanzamento barra, pinze di avanzamento barra con inserto a cambio rapido e boccole guida barra. Sono disponibili con alesaggio tondo, esagonale, quadro e possono essere eseguiti profili speciali su richiesta.

Descrizione e specifiche

Le pinze per torni plurimandrino sono costruite con acciaio certificato altamente legato, sono temprate e completamente rettificate. Tutto il ciclo produttivo viene svolto nel nostro stabilimento in Italia con macchine utensili di alta precisione ed è rigorosamente controllato. Grazie all'ampia disponibilità di magazzino possiamo generalmente spedire il materiale il giorno stesso della ricezione dell'ordine.

Maggiori informazioni

Possono essere fornite con superficie liscia, rigata o zigrinata. Per una maggiore forza di serraggio possiamo eseguire sul foro della pinza un rivestimento in metallo duro. Possiamo inoltre eseguire pinze con battuta, pinze fuori centro, pinze con misura decimale e sagome speciali con elettroerosioni.

Prodotti

Pinze stringibarra – Pinze spingibarra – Pinze di serraggio tirate con filetto esterno – Pinze di serraggio tirate con filetto interno – Pinze con aggancio rapido – Pinze di avanzamento barra – boccole guida barra.

Collets for multi-spindle lathes are used on production machines Gildemeister, Schütte, Mori say, Wickman, Tornos, Index, Traub, etc ... we can supply the whole series for the spindle of the lathe: collets for main spindle, collets for pick-up spindle, feed fingers collets, feed fingers collets with quick change insert and guide bushes. They are available with bore round, hexagonal, square and special profiles can be run on demand.

Description and Specifications

Collets for multispindle lathes are produced with certified top quality steel, they are hardened and completely grinded. All production cycle is carried out in our factory in Italy with high precision machines and is carefully controlled. Thanks to the availability of stock, we can usually ship the material the same day as order is received.

Further Information

They can be supplied with bore smooth, grooved or serrated. For greater clamping force we can perform on the hole of the collets a carbide coating. We can also perform collets with stop, out of centre collets, collets with decimal measure and special shapes with EDM.

Products

Clamping collets – Feed finger collets – Draw back collets with external thread – Draw back collets with internal thread – Quick installation collets – Guide bushes.





PINZE PER MANDRINO PRINCIPALE

COLLETS FOR MAIN SPINDLE

Art. / Code	Macchina / Machine	Modello / Type
022.227	GILDEMEISTER	AS12
021.230	GILDEMEISTER	GM16-AC
018.234	GILDEMEISTER	AS16/AS GS GM20-6
022.238	GILDEMEISTER	AS16/20 GS/GM20 V.25
022.239	GILDEMEISTER	AS32
021.241	GILDEMEISTER	GM26 AC
018.245	GILDEMEISTER	GS 25 variante 32
022.245	GILDEMEISTER	AS 25
022.253	GILDEMEISTER	AS GS GM32/GM35-6/8
022.257	GILDEMEISTER	GMC 42
022.264	GILDEMEISTER	AS GS GM42-6
022.270	GILDEMEISTER	AS 48
022.325	SCHÜTTE	SE16
022.328	SCHÜTTE	SF20
018.331	SCHÜTTE	SG18/AG20
018.332	SCHÜTTE	SE16/SE18
018.333	SCHÜTTE	SF20
022.331	SCHÜTTE	SG/AG20 D>18mm
018.346	SCHÜTTE	VD/SD/SE25/AF/SF26
018.353	SCHÜTTE	SD/VD32/AF/SF32
022.356	SCHÜTTE	A36 PC
018.363	SCHÜTTE	AD40/SF42
018.375	SCHÜTTE	AF51/SF51/SD50
022.375	SCHÜTTE	SD/VD50 Fil.Int.
022.529	WICKMAN	5/8"
022.541	WICKMAN	1"-6M
022.555	WICKMAN	1"3/8-6M
022.564	WICKMAN	1"3/4-6M
022.425	TORNOS	AS14
018.425	TORNOS	SAS16
018.446	TORNOS	MULTI DECO 26/6
018.234	MORI SAY	6/20
022.541	MORI SAY	6/25 6/26
022.253	MORI SAY	6/32 8/32
018.363	MORI SAY	6/42 8/42
018.146	INDEX	KS/MS25
018.727	DAVENPORT	9/16"
022.623	GRIDLEY	7/16"

PINZE PER MANDRINO DA RIPRESA

COLLETS FOR PICK-UP SPINDLE

Art. / Code	Macchina / Machine	Modello / Type
021.018	GILDEMEISTER	GM16-AC
021.019	GILDEMEISTER	-
021.223	GILDEMEISTER	-
022.226	GILDEMEISTER	AS16/AS/GS/SM20-6
022.028	GILDEMEISTER	AS16/AS GS GM20-6
021.028	GILDEMEISTER	GM26-AC
022.039	GILDEMEISTER	AS32/GM32-35-6
021.039	GILDEMEISTER	GM32-35-6/8
021.047	GILDEMEISTER	AS GS GM42-6
010.047	GILDEMEISTER	AS16-20-V25-6 Mandrino Frontale
018.220	GILDEMEISTER	-
021.325	SCHÜTTE	SG18/AG20
022.028	SCHÜTTE	SE16/SE25
021.035	SCHÜTTE	SE25 SF26
022.039	SCHÜTTE	SD32 AD40 SF42
010.114	SCHÜTTE	A36 PC
010.123	SCHÜTTE	AD-SF40
010.128	SCHÜTTE	-
021.035	WICKMAN	1"-6M
021.047	WICKMAN	1"3/8 - 1"3/4
010.058	WICKMAN	1"
010.031	TORNOS	AS14/SAS16 (fil. 14x1)
010.064 B	TORNOS	BS20/BS22 (fil. 22x1)
021.035	TORNOS	MULTI DECO 26.6
022.028	MORI SAY	6/20
021.035	MORI SAY	6/25 6/26 6/32 8/32
021.047	MORI SAY	6/42 8/42
010.066	INDEX	KS/MS25



PINZE DI AVANZAMENTO CON INSERTO CAMBIO RAPIDO
FEED FINGERS COLLETS WITH QUICK CHANGE INSERT

Art. / Code	Macchina / Machine	Modello / Type
013.222-917	GILDEMEISTER	GM16-AC
013.225-920	GILDEMEISTER	AS16/AS GS GM20-6
013.230-924	GILDEMEISTER	AS16/20 GS/GM20 V.25
013.422-917	TORNOS	SAS16
013.225-920	MORI SAY	6/20

BOCCOLE GUIDA BARRA
GUIDE BUSHES

Art. / Code	Macchina / Machine	Modello / Type
001.218	GILDEMEISTER	GM16-AC
001.219	GILDEMEISTER	GM16-AC
001.228	GILDEMEISTER	AS16/AS GS GM20-6
001.229	GILDEMEISTER	AS16/AS GS GM20-6 Caricatore
001.232	GILDEMEISTER	AS32
001.233	GILDEMEISTER	AS32
001.236	GILDEMEISTER	-
001.240	GILDEMEISTER	GM32/6
001.242	GILDEMEISTER	GM35/6
001.328	SCHÜTTE	SG18/AG20/SF20
001.352	SCHÜTTE	SF42
001.423	TORNOS	AS14
001.424	TORNOS	SAS16

PINZE DI AVANZAMENTO BARRA
FEED FINGERS COLLETS

Art. / Code	Macchina / Machine	Modello / Type
012.220	GILDEMEISTER	AS12
012.222	GILDEMEISTER	GM16-AC
012.225	GILDEMEISTER	AS16/AS GS GM20-6
012.230	GILDEMEISTER	AS16/AS GS GM20d25
012.231	GILDEMEISTER	GM26-AC
012.233	GILDEMEISTER	AS25
012.238	GILDEMEISTER	GS25 variante 32
012.240	GILDEMEISTER	AS32-6 GM32
012.241	GILDEMEISTER	GM32-6
012.242	GILDEMEISTER	GM35-6
012.243	GILDEMEISTER	GM35-6 GM35-8
012.251	GILDEMEISTER	AS GS GM42-6
012.257	GILDEMEISTER	AS48
012.325	SCHÜTTE	SE16 SE18
012.326	SCHÜTTE	SG18-AG20
012.335	SCHÜTTE	SD/SE25 AF/SF26
012.343	SCHÜTTE	SD/VD32/AF/SF32
012.351	SCHÜTTE	AD40/SF42
012.521	WICKMAN	5/8"-6
012.531	WICKMAN	1"-6M
012.542	WICKMAN	1"3/8-6M 1"3/8 5M
012.552	WICKMAN	1"3/4-6M 1"3/4 5M
012.418	TORNOS	AS14
012.422	TORNOS	SAS16
012.225	MORI SAY	6/20
012.531	MORI SAY	6/25 6/26
012.240	MORI SAY	6/32 8/32
012.343	MORI SAY	6/32 8/32
012.351	MORI SAY	6/42 8/42
012.335	INDEX	KS/MS25



PINZE DI SERRAGGIO CON FILETTO ESTERNO Tipo 018
COLLETS WITH EXTERNAL THREAD

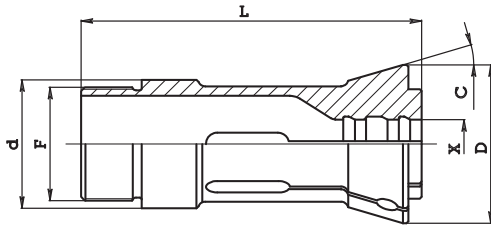


Fig. 1

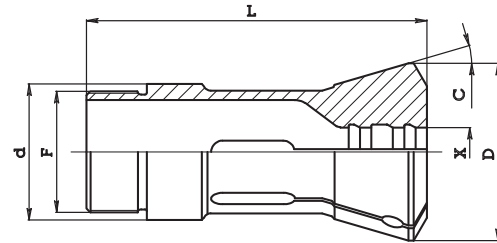


Fig. 2

Art. / Code	d	D	L	C	F	Fig.	Alesaggio max / Max bore			Macchina / Machine	
							○	⬡	□		
018.146	46	60.5	120	15°	40x1.5 Sin	2	26	23	18	INDEX	
018.214	14	17	76	15°	14x1	2	10	8	7	GILDEMEISTER	
018.220	20	22	94	6°	17x0.75 Sin	2	13	11	9	GILDEMEISTER	
018.234	9012 E	34	42	90	16°	30x1 Sin	1	25	22	18	GILDEMEISTER - MORI SAY
018.245	9046 E	45	60.4	164	15°	42x1 Sin	1	26	22	22	GILDEMEISTER
018.331		31.9	42	84	15°	28x1 Sin	2	18	16	13	SCHÜTTE (Chiav.5)
018.332	9007 E	31.9	42	84	15°	28x1 Sin	2	20	17	14	SCHÜTTE (Chiav.6)
018.333	9016 E	32	41.5	84	15°	30x1 Sin	2	20	17	14	SCHÜTTE
018.346	9039 E	46	60.3	120	15°	40x1.5 Sin	2	26	23	18	SCHÜTTE
018.353	9070 E	53	69.3	136.5	15°	47x1.5 Sin	2	32	28	23	SCHÜTTE
018.363	9112 E	62.9	78.3	157	15°	56x1.5 Sin	2	42	36	29	SCHÜTTE - MORI SAY
018.375	9139 E	75	97.8	187	15°	68x1.5 Sin	2	51	44	36	SCHÜTTE
018.425	9021 E	25	35	94	15°	25x1	2	16	14	11	TORNOS
018.446		46	60.3	120	15°	40x1.5 Sin	2	26	23	18	TORNOS
018.727		26.95	30.19	114.3	15°	26.4x16 fil"	2	13	11	9	DAVENPORT

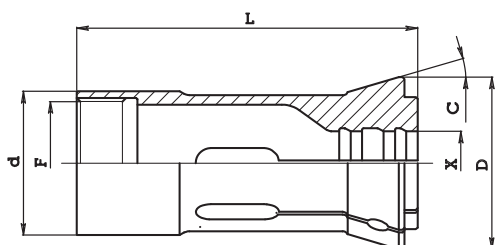
PINZE DI SERRAGGIO CON FILETTO INTERNO Tipo 022
COLLETS WITH INTERNAL THREAD


Fig. 1

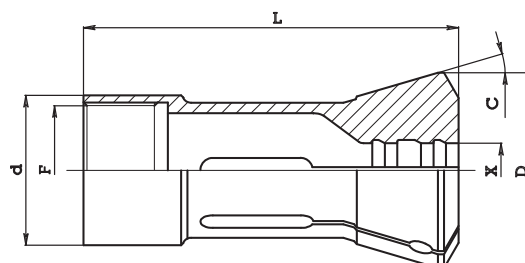


Fig. 2

Art. / Code	d	D	L	C	F	Fig.	Alesaggio max / Max bore			Macchina / Machine	
							○	⬡	□		
022.028	28	32	64	8°	24x1.5 Sin	2	24	21	17	GILDEMEISTER - SCHÜTTE MORI SAY	
022.039	39	44	90	8°	34x1 Sin	2	32	28	23	GILDEMEISTER - SCHÜTTE	
022.226	26	28.5	80	6°	21.5x0.75	2	20	17	14	GILDEMEISTER	
022.227	9013 E	26.8	34	88	15°	24x1 Sin	1	18	15	12	GILDEMEISTER
022.238	9017 E	38	45.5	90	16°	34.5x0.75 Sin	1	27	22	17	GILDEMEISTER
022.239		38	44	80	15°	24x1.5	2	32	29	22	GILDEMEISTER
022.245	9045 E	45	60.4	164	15°	40x1 Sin	2	25	22	17	GILDEMEISTER
022.253	9069 E	53	69.4	137	15°	48x1.5 Sin	2	38	31	25	GILDEMEISTER - MORI SAY
022.257		57	70	137	15°	52x1.5 Sin	2	46	38	32	GILDEMEISTER
022.264	9115 E	64	80.5	134	15°	59x1.5 Sin	2	42	37	30	GILDEMEISTER
022.270	9132 E	70	90.4	167.5	15°	65x1.5 Sin	2	53	45	33	GILDEMEISTER
022.325		25	35	58	15°	18x1.5 Sin	2	18	16	13	SCHÜTTE
022.328		28	36	55	15°	24x1.5 Sin	2	20	17	14	SCHÜTTE
022.331		32	41.5	84	15°	29x1 Sin Con1:8	2	21	18	14	SCHÜTTE
022.356		56	72.3	139	15°	52X1.5 Sin	2	46	40	33	SCHÜTTE
022.375		75	97.8	175	15°	70x1.5 Sin	2	63	55	45	SCHÜTTE
022.425	9001 E	25	35	75	15°	22x1	2	14	12	9	TORNOS
022.529	9014 E	29.4	38.1	92.2	15°	26.2x24 fil" Sin	2	22	19	15	WICKMAN
022.541	9034 E	41.3	54.5	132	15°	37.8x24 fil" Sin	2	25	22	18	WICKMAN - MORI SAY
022.555	9072 E	55.47	67	117	15°	50.927x22 fil"	2	36	31	25	WICKMAN
022.564	9111 E	64.21	78.5	127	15°	60.45x16 fil"	2	44	38	31	WICKMAN
022.623		23.77	29.3	78.8	15°	20.64x32 fil"	2	11	10	8	GRIDLEY

PINZE CON AGGANCIO RAPIDO Tipo 021
QUICK INSTALLATION COLLETS

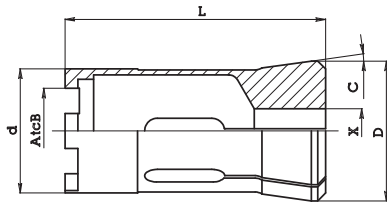


Fig. 1

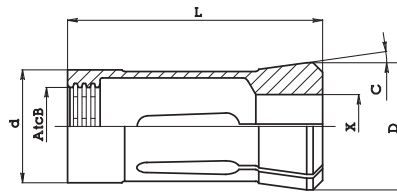


Fig. 2

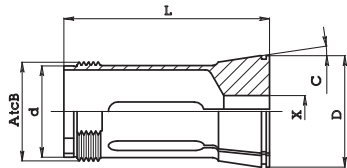


Fig. 3

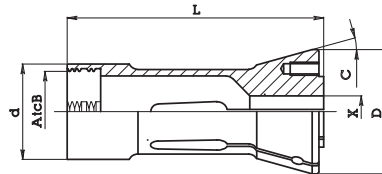


Fig. 4

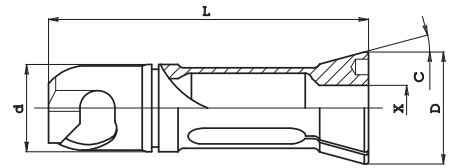
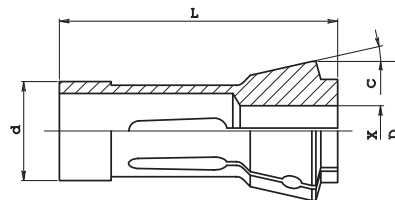


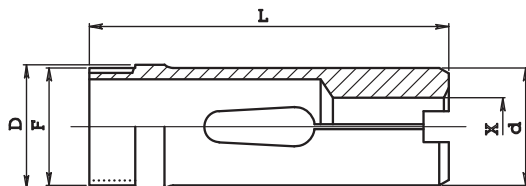
Fig. 5

Art. / Code	d	D	L	C	F	Fig.	Alesaggio max / Max bore			Macchina / Machine	
							○	◇	□		
021.018	18.7	25	51.5	8°	AtcB 21x1.5 60°	3	16	14	11	GILDEMEISTER	
021.019	18	22	47.5	8°	AtcB 14.4x1.5 30°	4	15	13	13	GILDEMEISTER	
021.026	28	35	88	30°	AtcB 25x2.7 30°	2	24	20	17	GILDEMEISTER	
021.027	28	32	73	8°	AtcB 25x2.7 30°	2	24	20	17	GILDEMEISTER	
021.028	28.7	35	64.5	8°	AtcB 31x1.5 60°	3	26	22	18	GILDEMEISTER	
021.029	28.5	32.5	66.8	12°	AtcB D28.1	-	24	20	17	GILDEMEISTER	
021.035	35.5	40	80	8°	AtcB 27x2.7 30°	2	32	27	22	SCHÜTTE - MORI SAY WICKMAN - TORNOS	
021.039	39	44	82	8°	AtcB 11x4	1	32	28	23	GILDEMEISTER	
021.047	47	52.5	73	8°	AtcB 29x2.7 30°	2	42	35	29	GILDEMEISTER - SCHÜTTE MORI SAY - WICKMAN	
021.223	23	30	60	16°	AtcB 22.5x2.7 30°	3	17	14	12	GILDEMEISTER	
021.230	9023 E	30	39	80.5	15°	AtcB 27.12x1.5 60°	4	16	14	11	GILDEMEISTER
021.230	9023 E	30	39	86.5	15°	AtcB 27.12x1.5 60°	4	9	8	8	GILDEMEISTER
021.241	41	53	106	15°	AtcB 37x2.7 30°	3	26	22	18	GILDEMEISTER	
021.325	25	32.1	91.5	15°	-	5	19	16	13	SCHÜTTE	

PINZE SPINTE Tipo 010
PUSH COLLETS



Art. / Code	d	D	L	C	Tipo / Type	Fig.	Alesaggio max / Max bore			Macchina / Machine
							○	◇	□	
010.031	16	21	66	16°	Mandrino pick-up	-	12	10	8	TORNOS (fil. 14x1)
010.047	20	26	60	15°	Mandrino frontale	-	20	17	14	GILDEMEISTER
010.058	25.4	38	94	15°	Mandrino pick-up	-	20	17	14	WICKMAN
010.064 B	25	35	77	16°	Mandrino pick-up	-	20	17	14	TORNOS (fil. 22x1)
010.066	25	35	65	15°	Mandrino pick-up	-	21	19	15	INDEX
010.114	44	54	76	15°	Mandrino pick-up	-	37	32	26	SCHÜTTE
010.123	52	60.5	60	15°	Mandrino pick-up	-	40	34	28	SCHÜTTE
010.128	59	67	76	15°	Mandrino pick-up	-	52	45	36	SCHÜTTE

PINZE DI AVANZAMENTO BARRA Tipo 012
FEED FINGERS COLLETS


Art. / Code		d	D	L	C	F	Fig.	Alesaggio max / Max bore			Macchina / Machine
								○	⬡	□	
012.220	9259 E	19.5	17.5	82	-	17x1	-	12	10	8	GILDEMEISTER
012.222	9268 E	20	22	86	-	20x1	-	16	14	11	GILDEMEISTER
012.225	9258 E	25	25	90	-	24x1	-	20	17	14	GILDEMEISTER - MORI SAY
012.230	9288 E	30	30.5	90	-	28.5x0.75	-	25	22	17	GILDEMEISTER
012.231		30.5	31.4	108	-	29.5x0.75	-	26	22	18	GILDEMEISTER
012.233	9287 E	33	32.5	140	-	30x1 Sin	-	25	21	17	GILDEMEISTER
012.238		38.5	37.5	140	-	36x1	-	32	28	23	GILDEMEISTER
012.240	9336 E	39.8	41.2	136	-	38x1.5 Sin	-	32	28	23	GILDEMEISTER - MORI SAY
012.241		41	41.2	136	-	38x1.5	-	32	28	23	GILDEMEISTER
012.242	9335 E	41	41.2	136	-	39x1 Sin	-	35	31	25	GILDEMEISTER
012.243	9335 E	41	41.2	136	-	39x1	-	35	31	25	GILDEMEISTER
012.251	9374 E	50.2	51.5	136	-	48x1.5	-	42	37	30	GILDEMEISTER
012.325	9255 E	23	25	88	-	23x1	-	18	16	13	SCHÜTTE
012.326		25	26.6	88	-	24x1 Conico	-	20	17	14	SCHÜTTE
012.335	9282 E	33	35	118	-	33x1.5	-	26	23	18	SCHÜTTE - INDEX
012.343	9319 E	40	43	130	-	38x1.5	-	32	28	23	SCHÜTTE - MORI SAY
012.351	9372 E	48	51	158	-	48x1.5	-	42	36	29	SCHÜTTE - MORI SAY
012.418	9251 E	17.5	18	70	-	16x0.75	-	14	11	9	TORNOS
012.422	9265 E	20.5	22.8	98	-	20x0.75	-	16	14	11	TORNOS
012.521	9260 E	21.6	21.6	86	-	19.68x24 fil" Sin	-	16	14	11	WICKMAN
012.531	9276 E	31	31.9	133	-	30.07x24 fil" Sin	-	25	22	18	WICKMAN - MORI SAY
012.542	9318 E	41.5	42.84	118	-	40.46x24 fil" Sin	-	36	31	25	WICKMAN
012.552	9362 E	51.5	52.21	127	-	49.98x22 fil" Sin	-	44	38	31	WICKMAN
012.257	9368 E	57	56	160	-	54x1.5 Sin	-	53	45	33	GILDEMEISTER

PINZE DI AVANZAMENTO CON INSERTO CAMBIO RAPIDO Tipo 013

FEED FINGERS COLLETS WITH QUICK CHANGE INSERT

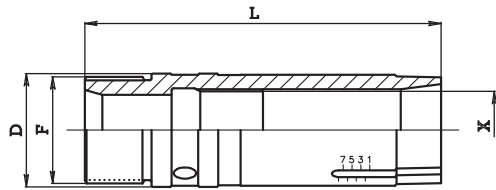


Fig. 1

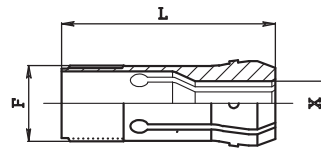


Fig. 2

Art. / Code	D	L	F	Fig.	(X) Art. inserto / Insert code	Alesaggio max / Max bore			Macchina / Machine
						○	⬡	□	
013.222-917	22	74	20x1	1	013.917	14	12	10	GILDEMEISTER
013.225-920	9258 E 25.5	80	24x1	1	013.920	17	15	12	GILDEMEISTER - MORI SAY
013.230-924	9288 E 30.5	78	28.5x0.75	1	013.924	21	18	14	GILDEMEISTER
013.422-917	9265 E 22.8	85	20x0.75	1	013.917	14	12	10	TORNOS
013.240-935	9336 E 41.2	124	38x1.5 Sin	1	013.935	31	27	22	GILDEMEISTER - MORI SAY
013.241-935	41.2	124	38x1.5	1	013.935	31	27	22	GILDEMEISTER
013.242-935	9335 E 41.2	124	39x1.5 Sin	1	013.935	31	27	22	GILDEMEISTER
013.243-935	9335 E 41.2	124	39x1	1	013.935	31	27	22	GILDEMEISTER
013.917	-	48	17x1	2	-	14	12	10	-
013.920	-	61	20x1	2	-	17	15	12	-
013.924	-	65	24x1	2	-	21	18	14	-
013.935	-	83	35x1	2	-	31	27	22	-

BOCCOLE GUIDA BARRA Tipo 001

GUIDE BUSHES

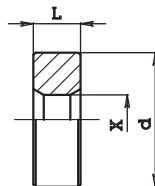


Fig. 1

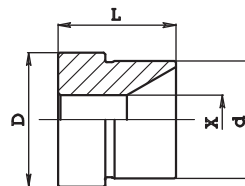


Fig. 2

Art. / Code	d	D	L	Fig.	Alesaggio max / Max bore			Macchina / Machine
					○	⬡	□	
001.218	18.5	-	12	1	12	11	8	GILDEMEISTER
001.219	16	18.5	18	2	13	12	10	GILDEMEISTER
001.228	28.5	-	10	1	25	22	18	GILDEMEISTER
001.229	25	28.5	25	2	20	17	14	GILDEMEISTER
001.232	32.7	35.9	9	2	32	27	22	GILDEMEISTER
001.233	33	43.8	27	2	32	27	22	GILDEMEISTER
001.236	36	42.5	40	2	28	24	20	GILDEMEISTER
001.240	40	47.8	43	2	32	27	22	GILDEMEISTER
001.242	42	47.8	43	2	35	30	24	GILDEMEISTER
001.328	28	-	22	1	20	17	14	SCHÜTTE
001.352	52	-	36	1	42	36	30	SCHÜTTE
001.423	24	-	8	1	14	12	10	TORNOS
001.424	24x1	-	14	1	20	17	14	TORNOS

CHIA-MO

WWW.CHIAMO.IT

I T A L Y



CHIA-MO srl

Via Caduti di Sabbiano, 12
40011 Anzola dell'Emilia (Bo) Italy
Tel. +39 051 734153 - Fax +39 051 734958
info@chiamo.it - www.chiamo.it

